

# BUILDING

# COMMUNITIES

# TOGETHER

We build impactful relationships with our people, partners, and communities by putting people at the heart of our business.

Clark Builders is a leading general contracting and construction management company serving healthcare, commercial, and industrial clients across Western and Northern Canada.

Our self-perform and preconstruction capabilities provides our clients with early planning, allowing us to cost-effectively provide better quality results, while controlling the schedule and delivering in a timely basis. These benefits coupled with our people-first approach, means we go above and beyond what's expected. We deliver exceptional projects that are safely constructed, efficiently executed, and purposefully driven to help improve the communities we serve.

While our direct impact is in the construction of buildings, our purpose runs deeper. We are unwavering in our commitment to enriching the lives of the people who work with us and in the communities we help build. Our innovative and sustainable projects leave a lasting legacy for future generations.

**SINCE 2010, WE HAVE COMPLETED OVER 30 SENIORS LIVING FACILITIES WHICH EQUATES TO:**



\$761,000,000 of value



2,220,000 square feet



3,441 units



Countless happy residents



**CLARK**  
**BUILDERS**  
SENIORS LIVING





## RESIDENT-CENTERED APPROACH

When it comes to senior living construction, we build every facility with a focus on the resident's experience. By envisioning our loved ones in the space, we go beyond the drawings to ensure that comfort and accessibility are top priorities while delivering cost-effective solutions that can accommodate future growth. We place significance on infection prevention and control (IPC), when constructing safe and sterile spaces to prevent harm caused by infection to patients and health workers. The importance of good ventilation and HVAC systems as it pertains to resident comfort and ability to aid in immunocompromised patients. Since 2010, we have successfully delivered more than 3,000 senior living units with this resident-centered approach.

We're committed to ensuring the highest level of quality and care in every senior living facility we build. Our experienced construction teams develop trusted and collaborative partnerships with architects, consultants, and trade partners allowing for streamlined coordination and for us to oversee every detail of your project ensuring it is completed safely and efficiently.

## MARKET SECTOR TEAMS

Clark Builders has the teams, experience, and industry knowledge to provide seniors living sector clients with an unparalleled level of project planning, preconstruction services, and construction expertise to help reduce costs, maintain schedule, improve results and allow owners to operate their facilities on or ahead of schedule — clearly establishing us as the preferred, seniors living builder across Western and Northern Canada.

Our market sector team for seniors living is established as a one team approach, working together to service all of Clark Builders' business units and offices, no matter of location. The market sector team is comprised of subject matter experts who bring expertise and provide leadership and strategic direction for the growth and development of the market sector, all while offering unparalleled service, and industry insights through collaborative engagement with our clients and consultants. The market sector team bring a focused, global understanding of where the seniors living industry is headed as well as what makes a seniors facility successful for our clients and residents.



# SELECT SENIORS LIVING EXPERIENCE



## CAMBRIDGE MANOR

### OWNER

Brenda Strafford  
Foundation

### BUILDING SIZE

248,000 sq.ft.

### COMPLETION

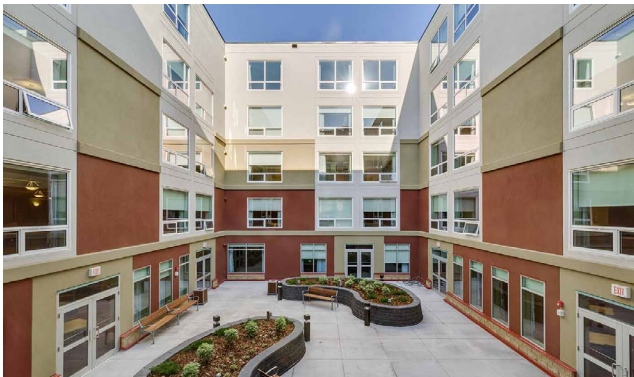
2020

### LEVEL OF CARE

Specialized dementia,  
private assisted living, LTC  
studios & one bedroom  
suites.

### COLLABORATORS

S2 Architecture  
West Campus  
Development Trust



## BRENTWOOD CARE CENTRE PHASE III

### OWNER

Intercare Corporate Group

### BUILDING SIZE

190,252 sq.ft.

### COMPLETION

August 2018

### LEVEL OF CARE

Full spectrum of LTC  
programs offered

### COLLABORATORS

Zeidler Architecture



## BOW RIVER SENIORS LODGE PHASE II

### OWNER

Alberta Social Housing  
Corporation

### BUILDING SIZE

52,500 sq.ft.

### COMPLETION

2021

### LEVEL OF CARE

Supportive living and  
specialized dementia  
housing

### COLLABORATORS

MTA Urban Design  
Architecture Interior  
Design Inc.



## POINTS WEST LIVING - RED DEER PHASE II

### OWNER

Points West Living

### BUILDING SIZE

136,415 sq.ft.

### COMPLETION

2020

### LEVEL CARE

Supportive living,  
designated supportive  
living, LTC

### COLLABORATORS

RPK Architects

## WANT TO LEARN MORE? CONTACT ONE OF OUR SUBJECT MATTER EXPERTS.



### **BRUCE BRUNETTE**

VP, Construction, Market Sector Leader, Seniors Living  
bruce.brunette@clarkbuilders.com | 403.319.0872

Years of Experience: 42 | Years with Clark Builders: 14

Bruce is experienced in the full spectrum of seniors living facilities along the continuum of care, and has been involved in all of Clark Builders' seniors living portfolio. He brings his immense knowledge of sector requirements, quality, delivery and insights to the industry to ensure we deliver facilities focused on the resident's experience.

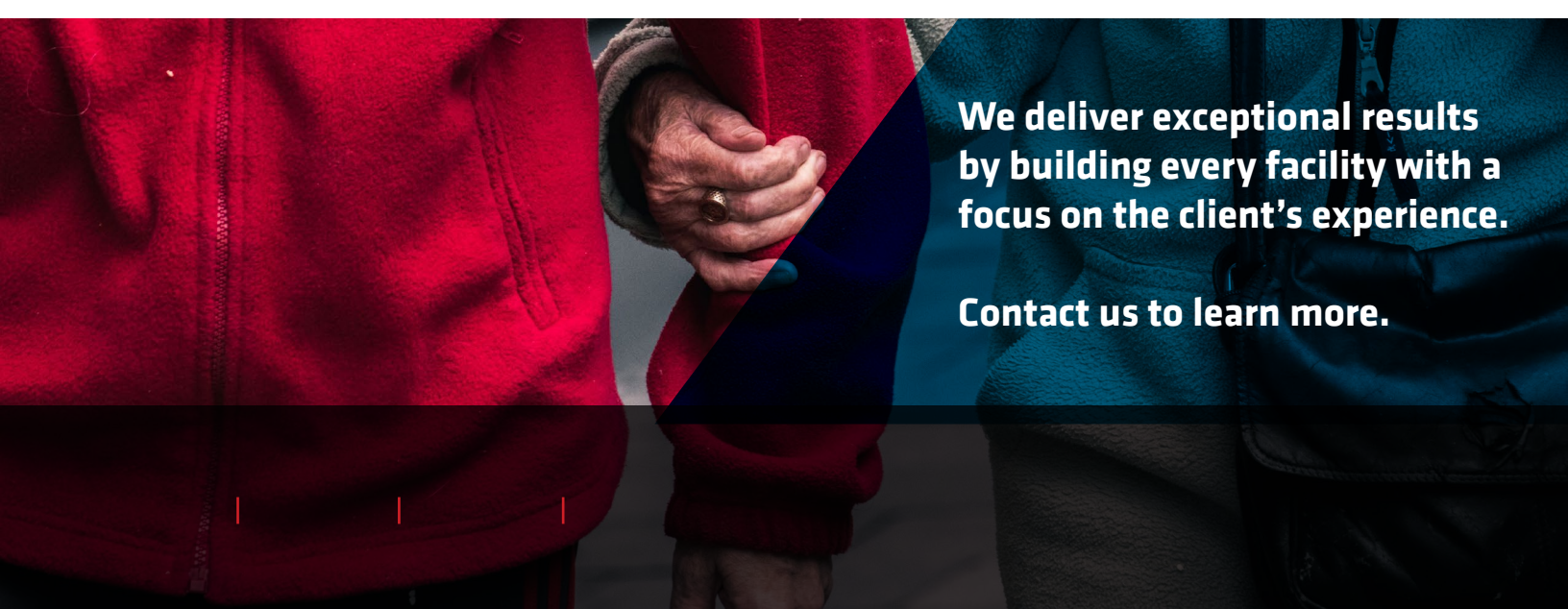


### **CHRIS LANTING**

Project Executive, Sector Specialist, Seniors Living  
chris.lanting@clarkbuilders.com | 403.319.0857

Years of Experience: 22 | Years with Clark Builders: 20

Chris' project expertise includes the full spectrum of seniors living facilities along the continuum of care, with several seniors living and residential care style facilities successfully completed. He works collaboratively with the market sector team, clients and consultants and exudes an unwavering commitment to every project.

A background image showing the hands and forearms of two people, one in a red jacket and one in a blue jacket, holding hands. The image is partially obscured by a dark blue diagonal overlay.

**We deliver exceptional results  
by building every facility with a  
focus on the client's experience.**

**Contact us to learn more.**